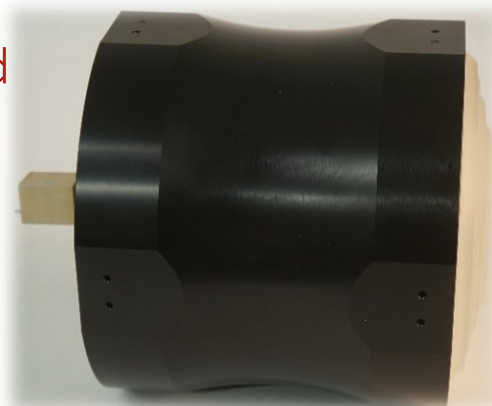


ANLN-K03025

Near-Focusing Lens Antenna, 6", K-band

Features

- Beam Focusing
- Full K-band Coverage



Electrical Specification

Frequency	18.0 – 26.5 GHz
Beam Waist	2.5"
Focal Length	30.0"
Input Ports	WR-42, UG-595/U
Material	Antenna, OMT, Fixture – Aluminum Alloy Lens Housing – Delrin or equivalent Lens: Rexolite

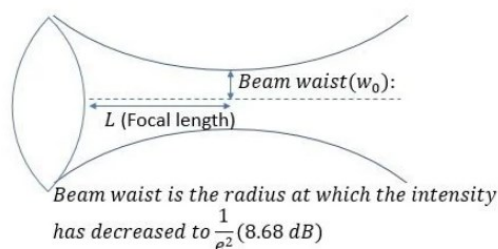
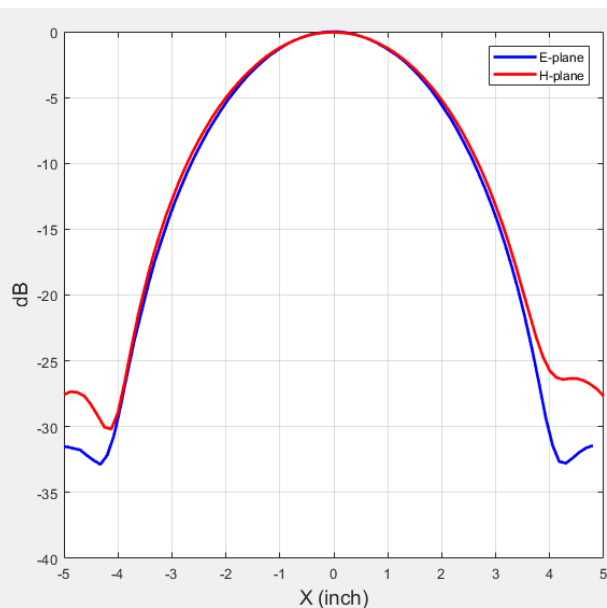
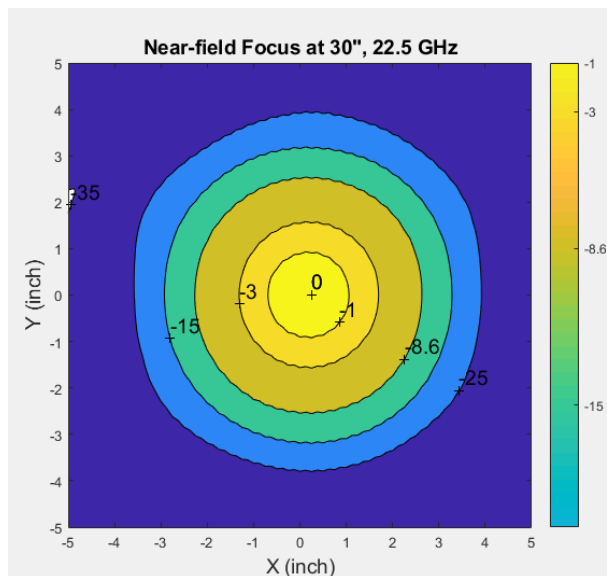


Fig.1 Definition of Beam waist and focal length for near-focus lens antenna

Typical Test Data



Outline Drawing

