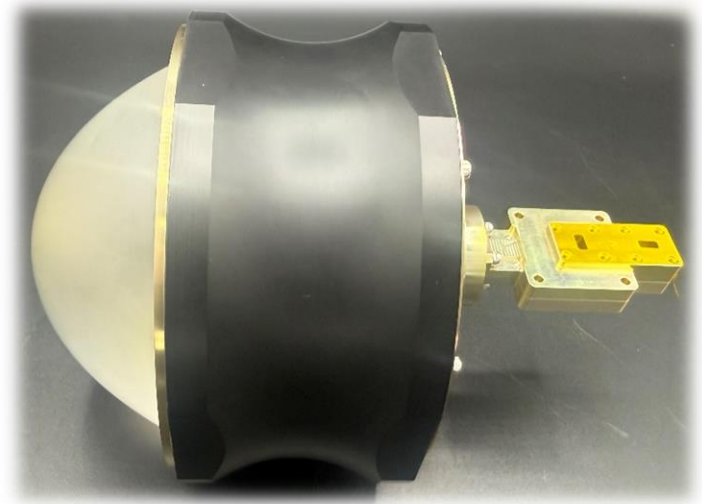


### ANLF-6ADSC2

#### Lens Antenna, 6", Ka-band

##### Features

- Dual Linear Polarization
- Full Ka-band Coverage
- Minimum Length
- High Isolation / XPD
- Single Input Plane Configuration

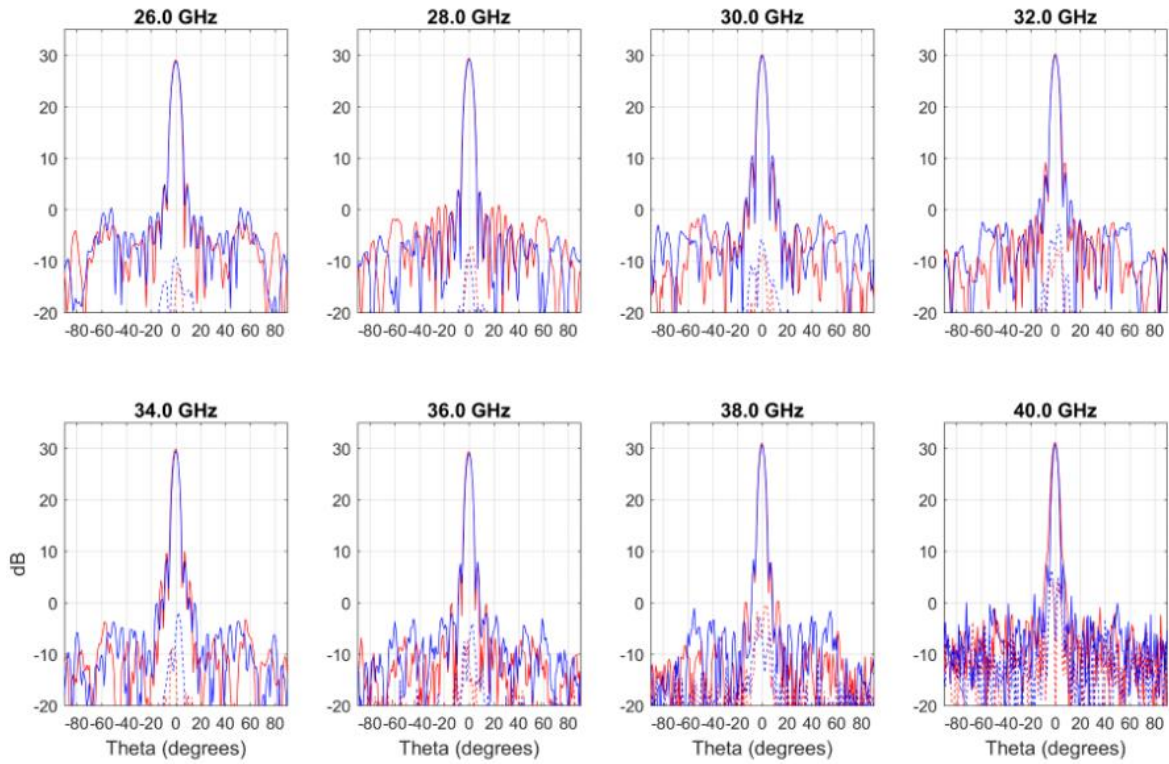


##### Electrical Specification

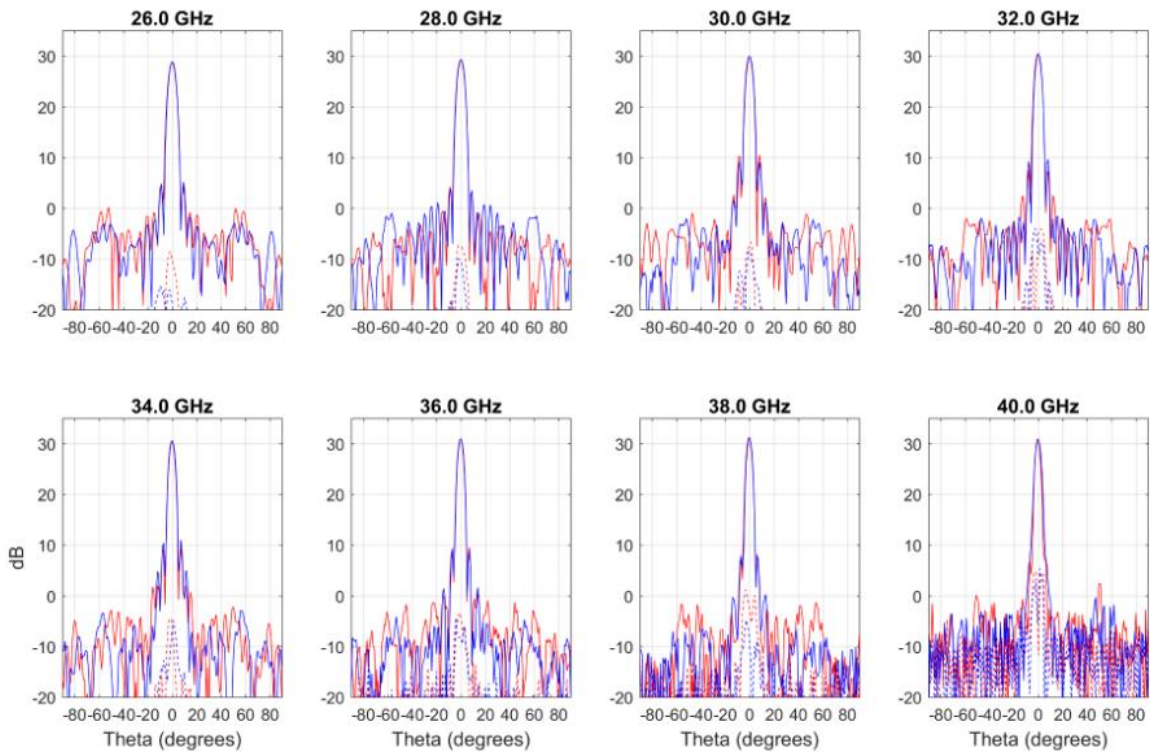
<b>Frequency</b>	26.0 – 40 GHz
<b>Gain</b>	30.0 dBi
<b>Beamwidth</b>	8.0 degrees (Beam Symmetry)
<b>Polarization</b>	Linear
<b>V- &amp; H-port Isolation</b>	45 dB
<b>XPD</b>	35 dB
<b>Sidelobe Level</b>	20 dB
<b>Input Ports</b>	WR-28, UG-599/U
<b>Material</b>	Antenna, OMT, Fixture – Aluminum Alloy Lens Housing – Delrin or equivalent Lens: Rexolite
<b>Weight</b>	2.5 lbs

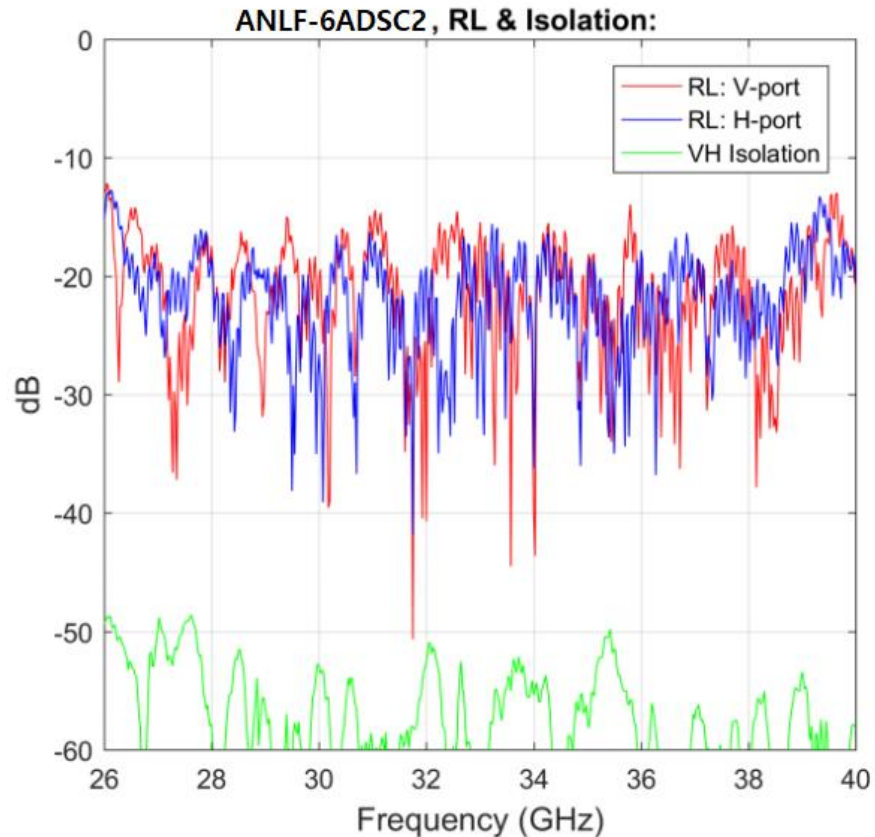
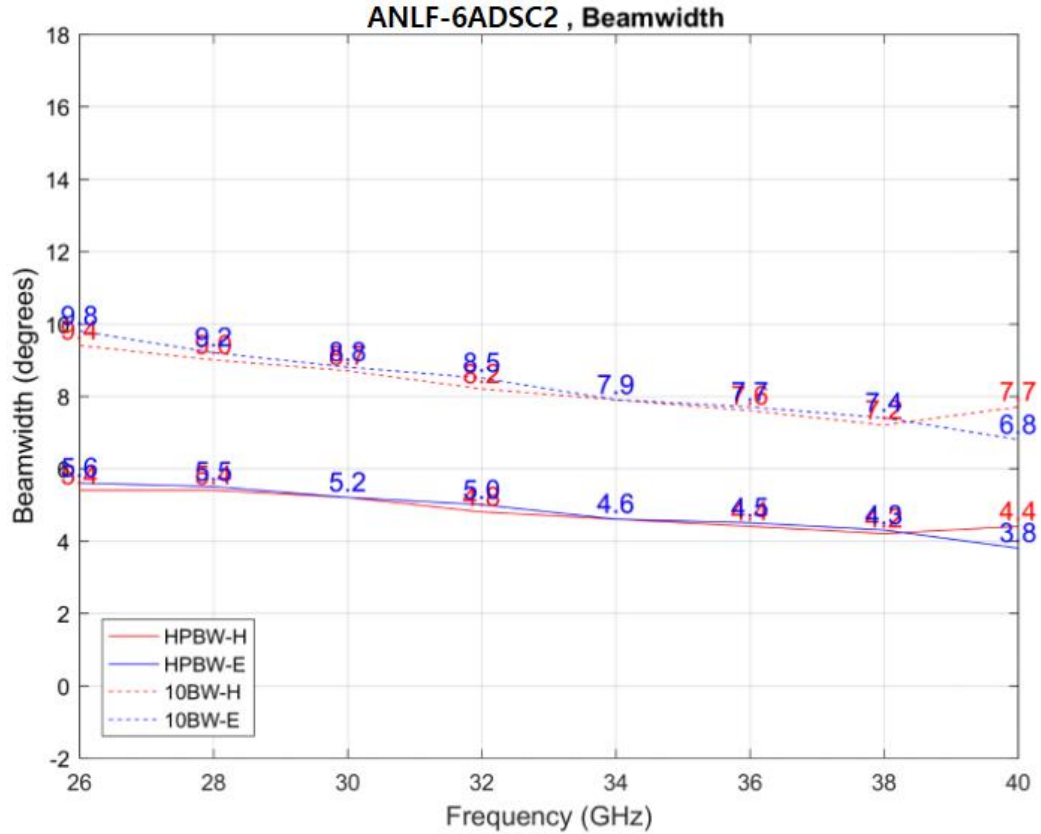
### Typical Test Data

#### H Port Excitation



#### V Port Excitation





### Outline Drawing

