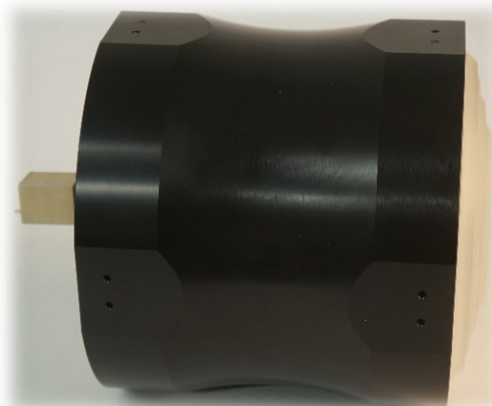


ANLF-A012DL0

Lens Antenna, 12", Ka-band

Features

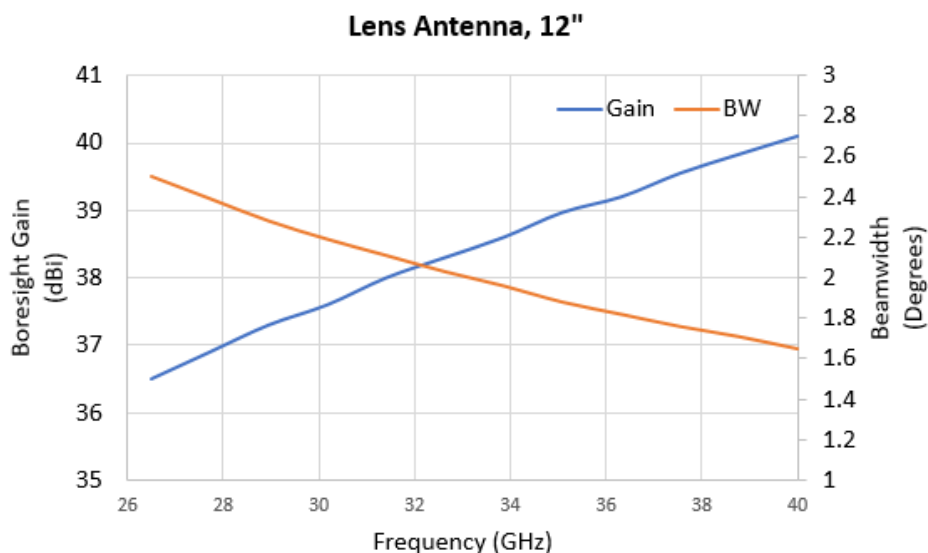
- Dual Linear Polarization
- Full Ka-band Coverage



Electrical Specification

Frequency	26.5 – 40 GHz
Gain	38.5 dBi
Beamwidth	1.95 degrees (Beam Symmetry)
Polarization	Linear
XPD	25 dB
Sidelobe Level	25 dB
Input Ports	WR-28, UG-599/U
Material	Antenna, OMT, Fixture – Aluminum Alloy Lens Housing – Delrin or equivalent Lens: Rexolite

Typical Test Data



Outline Drawing

