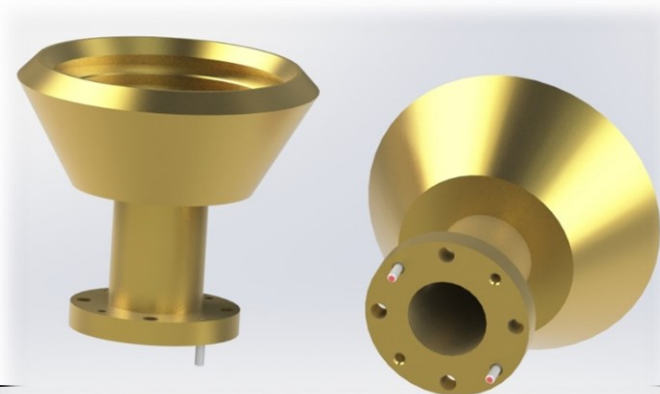


ANHS-KA150Q

Scalar Horn (H), 15 dBi Gain with Constant Beamwidth

Features

- Constant Beamwidth
- Excellent Beam Symmetry
- Low Sidelobe Level
- Ultra Broadband Operation

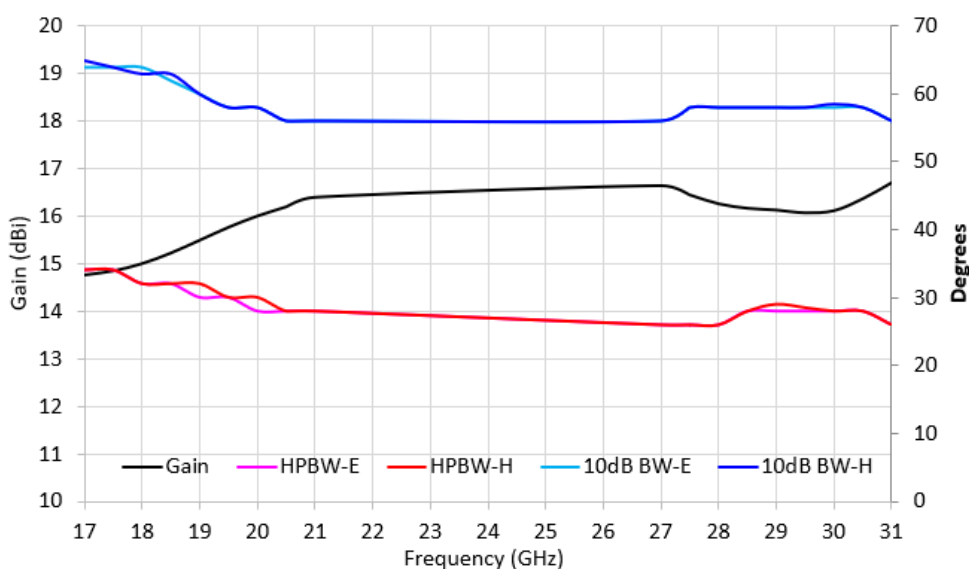


Electrical Specification

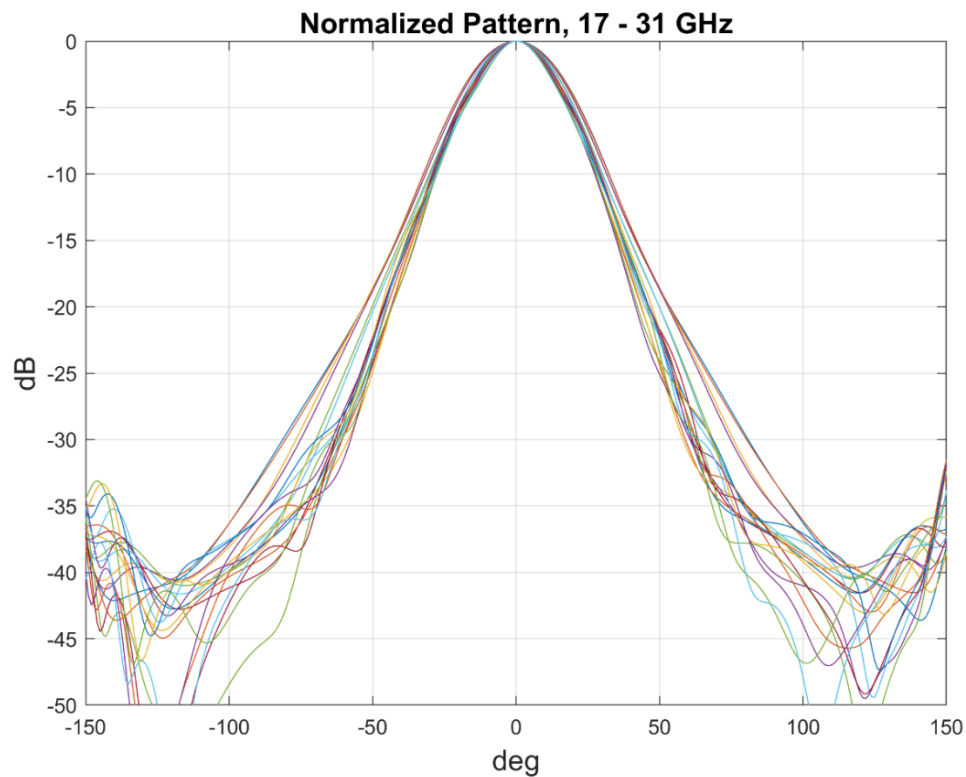
Frequency	17.0 – 21.0 & 27.0 – 31.0 GHz
Gain	15.0 dBi
Half Power Beamwidth	30.0 degrees
10 dB Half Angle BW Variation	5 degrees
Sidelobe Level	25 dB
Input Ports	0.XXX" diameter Circular Waveguide Contact Raytech for more information
Flange	UG-425/U, Square

Electrical Specification

Gain & Beamwidth



Radiation Pattern



Outline Drawing

